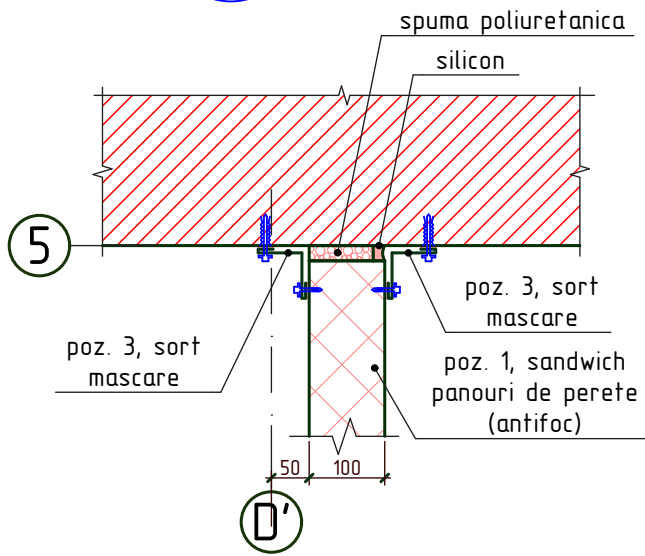
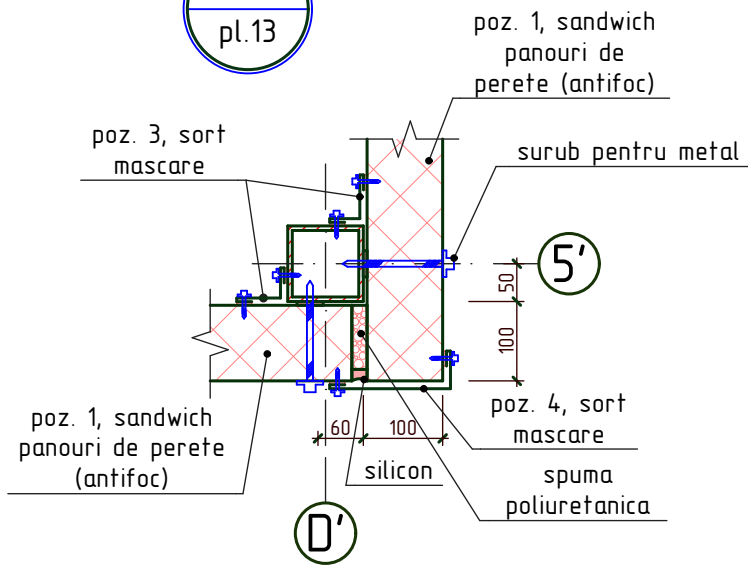


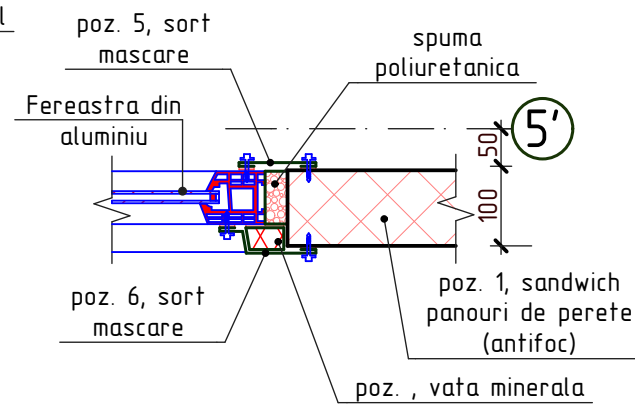
A  
pl.13



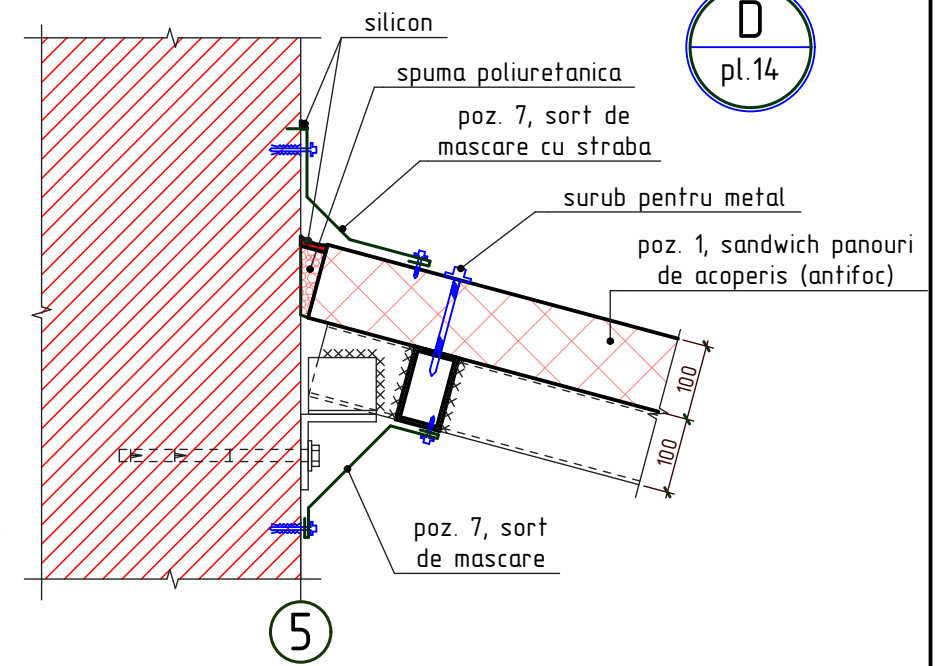
B  
pl.13



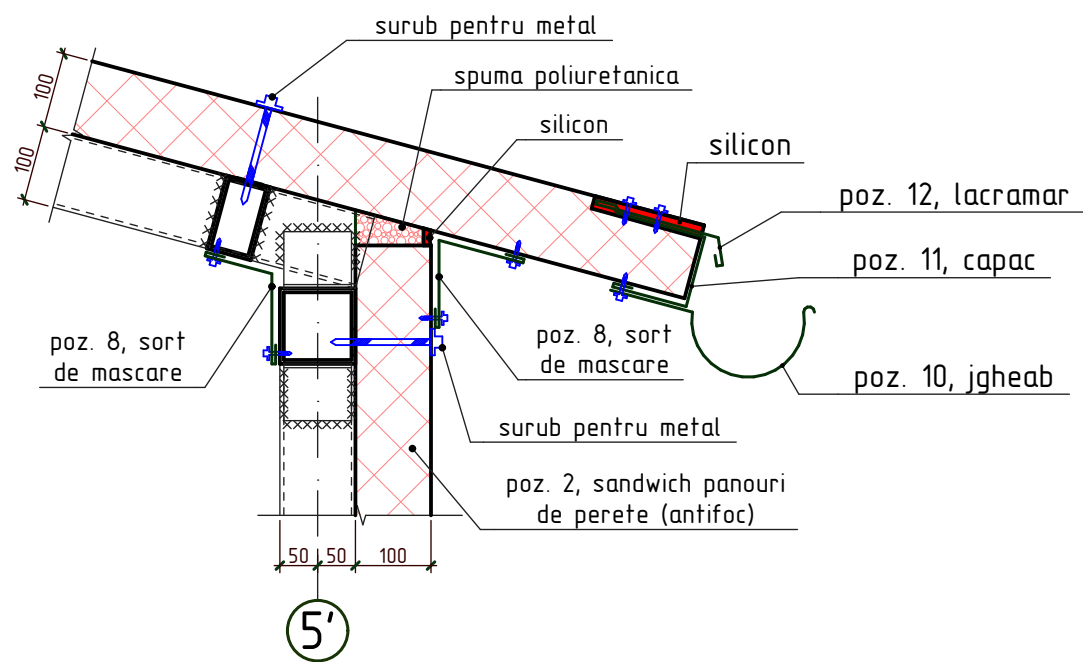
C  
pl.13



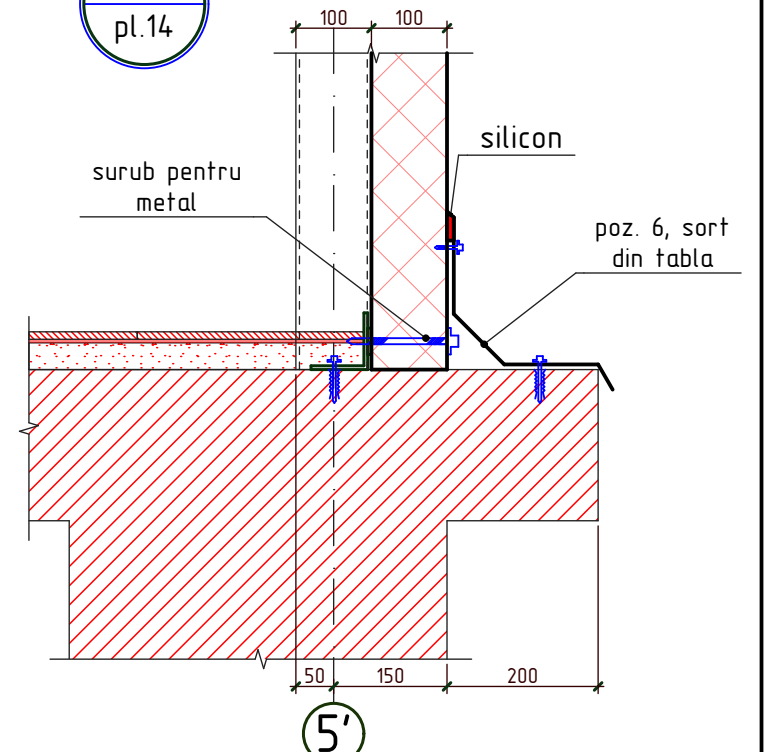
D  
pl.14



E  
pl.14



F  
pl.14



1. Plansa data se citește cu pl.-13, 14

Nr.inve.a.orig. Data si semnatura Nr.inve.schim.

						OBIECTIV NR. - 14.05-D/19-SAC			
						Reparatia capitala a unor incaperi in Liceul Teoretiv "Mihai Eminescu" din str. Stefan cel Mare si Sfint nr.81, mun. Balti			
Mod.	Can.	Foaia	Nr.d.	Semnat.	Data	Reparatie capitala	faza	plansa	planse
ASP	Postolachi				06.19		PE	15	
ISP	Hihlat E.				06.19				
Elaborat	Ciobanu V.				06.19	Nod A, B, C, D, E, F		SRL "GEO-CAD-PROIECT"	
								mun. Balti	